

# Quick Start Guide

jstor.org



JSTOR is a digital library of academic journals, books, and primary sources. JSTOR is highly interdisciplinary, and includes academic research covering more than 70 disciplines.

## Access to JSTOR

JSTOR is available both on campus and off campus. Having trouble getting access to JSTOR? Look for your school login link on [JSTOR's Login Page](#) or contact your library for assistance.

## Searching JSTOR

JSTOR supports full-text keyword searching across all of the content on the platform. There are two search options on JSTOR, a [Basic Search](#) and an [Advanced Search](#).

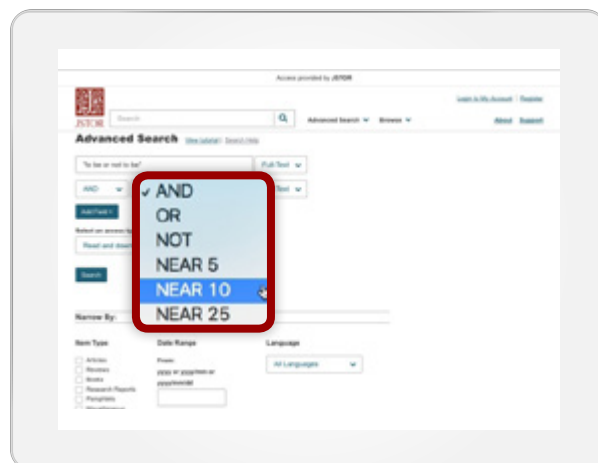
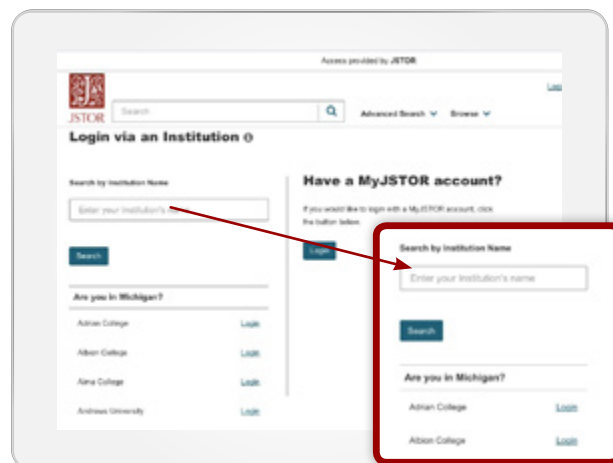
### Tips for using the Basic Search:

- Place words within quotation marks to search for exact phrases (“to be or not to be”).
- Use Boolean operators to construct a better search (“tea trade” AND china).

### Tips for using the Advanced Search:

- Use the drop-down boxes to limit search terms to the title, author, abstract, or caption text.
- Use the drop-down boxes to combine search terms using AND/OR/NOT.
- Use the “Narrow by” options to search only articles, include/exclude book reviews, search for content published during a particular time frame, or in a particular language.

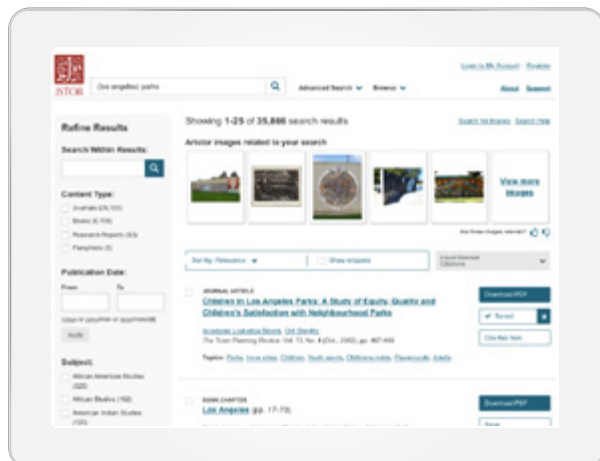
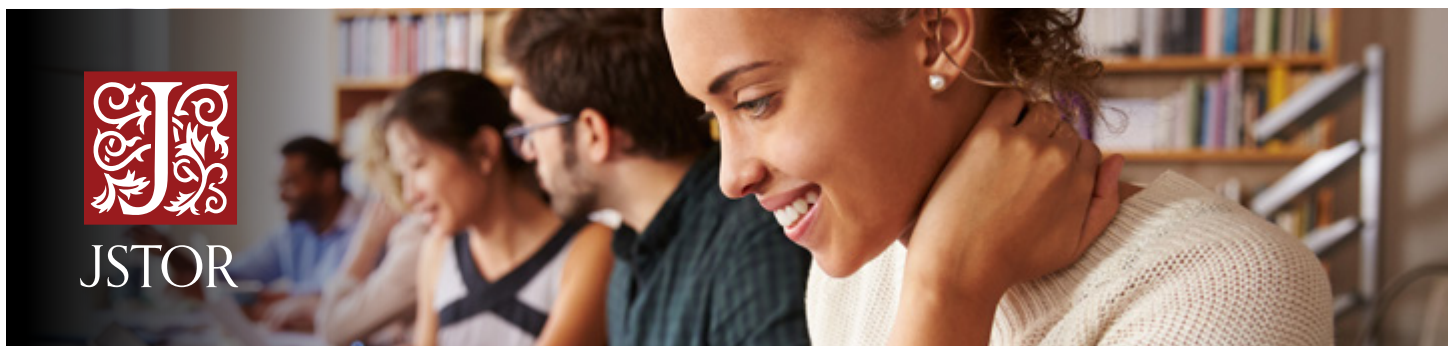
The default setting for search results is to show matches for only content licensed or purchased by the library, but you may change this setting.



Find more at [guides.jstor.org](https://guides.jstor.org)

# Quick Start Guide

jstor.org

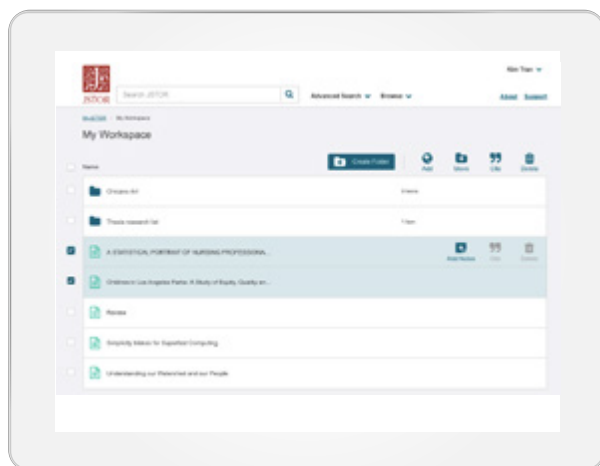
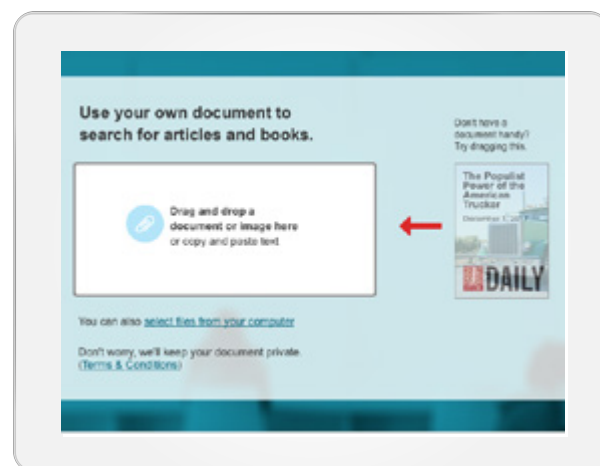


## Using Content on JSTOR

The search results page on JSTOR provides many ways to use the content, including a PDF option for downloading, saving the item to My Workspace, and citing the item in pre-formatted MLA, APA, or Chicago styles. Click on an item to read the full text on the view page.

## Search in a whole new way

**Text Analyzer** can help expand your research, find better keywords, and find things you missed. When you upload a document (article, assignment description, paper outline, etc) **Text Analyzer** will give recommendations for related content on JSTOR. The Text Analyzer option can be found under the Advanced Search menu, and on the article detail page.



## Save and Organize with My Workspace

Save sources with a single click and create folders to organize your work. You can also use this feature to export all your saved JSTOR citations at once, to use in your favorite reference manager.

Find more at [guides.jstor.org](https://guides.jstor.org)